

INTRODUCTION TO ENGINEERING CONSTRUCTION (ITEC)

Introduction:

The Introduction to Engineering Construction (ITEC) Programme is a one year course sponsored by the ECITB and will give the selected young person the relevant skills, knowledge and health and safety awareness required to prepare them for working in the engineering construction sector. Typically the course will be delivered 3 days per week over the academic year.

Key Facts:

Course Duration	1 Year
Attendance Time	3 Days Per Week
Pre-qualification Requirements	GCSE A*- C Maths, English & Science
PPE supplied	Yes

What will I learn?

While in centre, you will do practical study in;

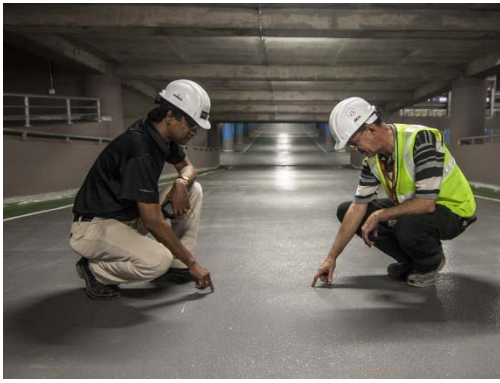
- General Health & Safety
- Basic power tools/ hand tools
- Cutting and shaping
- Gas cutting
- Plating
- Turning / Milling
- Welding
- Health and Safety Passport (CCNSG)
- Applying for jobs, CV writing and interview techniques
- Hands on experience in difference ECI disciplines, these could include :
 - Fabrication & Welding
 - Electrical Installation
 - Mechanical Installation
 - Design & Draughting

You will also work towards achieving an industry recognised Level 3 qualification.

How will I be assessed?

You will be assessed by the completion of assignments and multi-choice tests in a realistic industrial working environment.





Why choose NETA?

- You'll learn in a real working environment
- You'll receive excellent teaching and learning
- We have strong links with business and employers
- All of our Tutors are industry experienced
- Excellent progression opportunities

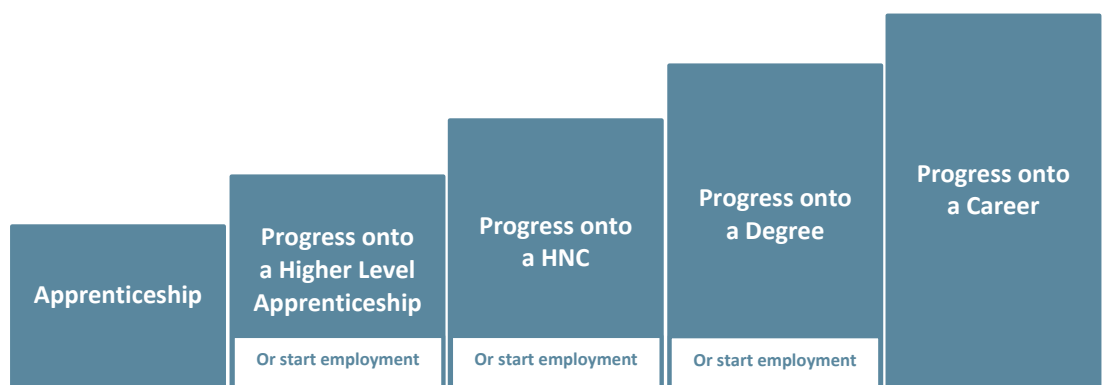
How do I apply?

Visit our website on: <http://www.neta.co.uk/apply/>

Call us on: 01642 616 936 or email us on: info@neta.co.uk

Career Opportunities & Progression:

There is a potential for you to progress onto an Apprenticeship upon completion of your programme



What's next?

You could move on to a Level 3 engineering qualification which could then lead onto an engineering apprenticeship.