

Level 2 VRQ in Electrical Engineering



Introduction: Choosing to study engineering is a great way to open up loads of future career opportunities. Whether you want to work in industry, specialise in a particular area or eventually go on to run your own consultancy firm, our courses will give you an understanding of the specialist work related skills that are in demand by many employers.

Key Facts:

Course Duration	One Year
Attendance Time	Full-Time
Pre-qualification Requirements	Functional Skills Level 2 in maths and English or equivalent for VRQ. You will study functional skills in English and Maths, if you haven't already achieved these grades.
PPE supplied	Yes, it's all supplied

What will I learn?

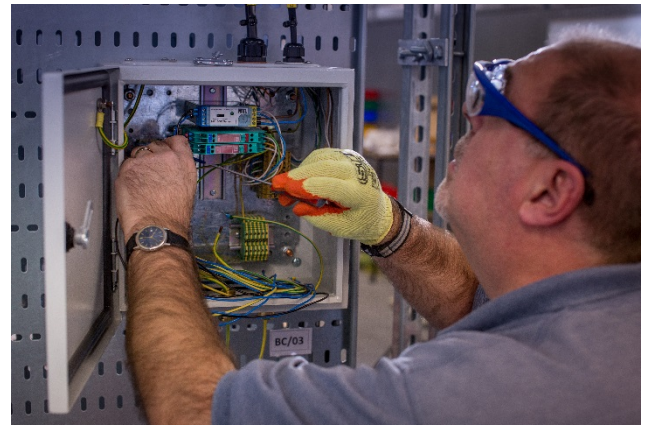
Testing & Inspection, Electrical Principles, Health & Safety Theory, CCNSG Safety Passport, Basic Power Tools/Hand Tools, Apply for Jobs, CV Writing and Interview Techniques.

Practical training in different Electrical Engineering disciplines, which could include: Electrical Installation, Design & Draughting, Motor Control, Fault Finding.

How will I be assessed?

Carrying out practical assessments and multi-choice tests in a realistic industrial working environment.





Why choose NETA?

- You'll learn in a real working environment
- You'll receive excellent teaching and learning
- We have strong links with business and employers
- All of our Tutors are industry experienced
- Excellent progression opportunities

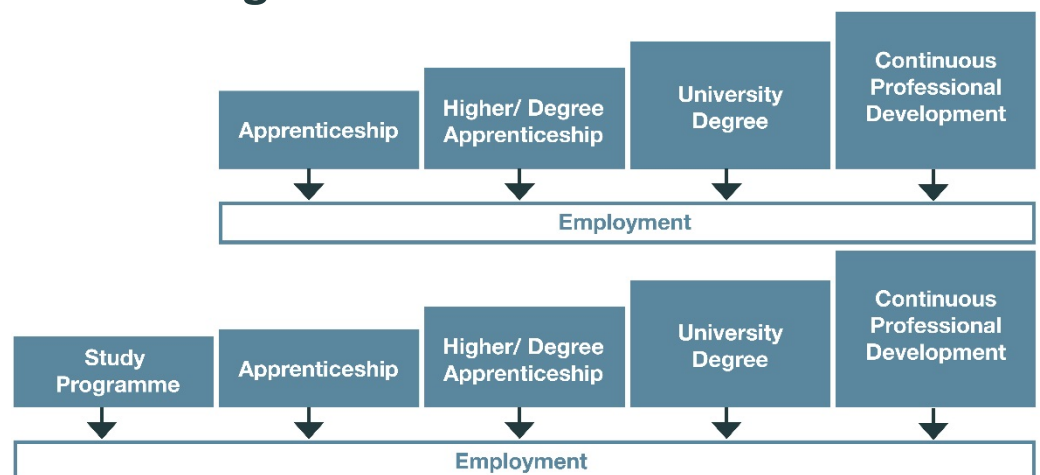
How do I apply?

Visit our website on: <http://www.neta.co.uk/courses/16-19-year-olds>

Call us on: 01642 616 936

Or email us on: info@neta.co.uk

Career Opportunities & Progression:



What's next?

You could move on to a Level 3 engineering qualification which could then lead onto an engineering apprenticeship.